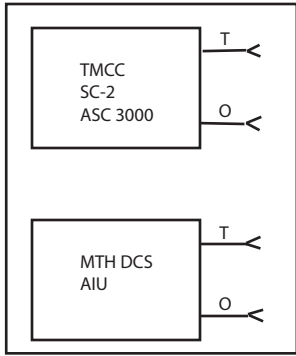


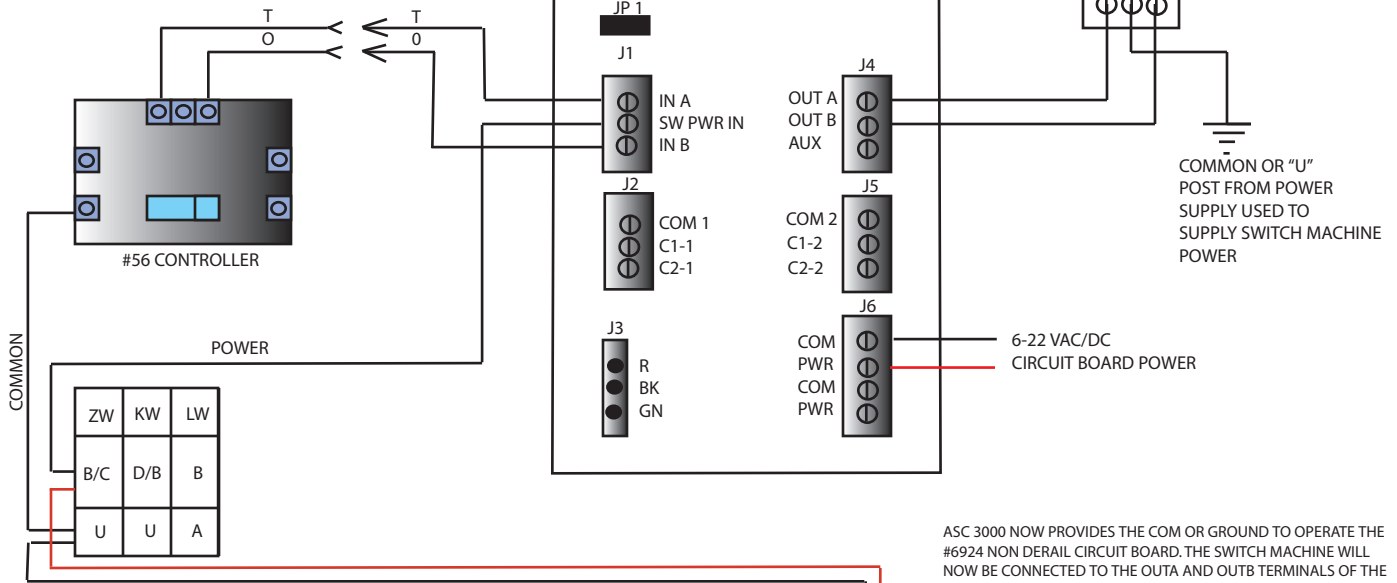
TYPICAL NON DERAIL WIRING WITH ASC 3000

● INSULATED RAIL LEADS 3 RAIL



T - THRU OR STRAIGHT ROUTE
O - DIVERGING OR TURNOUT ROUTE

INPUT TO "IN-A" & "IN-B" MUST ALWAYS BE GROUND OR COMMON
THE INPUTS CAN COME FROM SEVERAL SOURCES SUCH AS INSULATED RAIL SECTIONS, OUTPUTS FROM TMCC (SC2 OR ASC 3000), OR MTH (DCS- AIU).
INPUTS CAN ALSO COME FROM MANUAL PUSH BUTTONS OR ANY DETECTOR THAT PROVIDES A LOW OR NEGATIVE OUTPUT



ASC 3000 NOW PROVIDES THE COM OR GROUND TO OPERATE THE #6924 NON DERAIL CIRCUIT BOARD. THE SWITCH MACHINE WILL NOW BE CONNECTED TO THE OUTA AND OUTB TERMINALS OF THE #6924 CIRCUIT BOARD AND SWITCH MACHINE POWER WILL BE CONNECTED TO J1 "SW PWR IN"

WIRING REQUIRED TO OPERATE ATLAS SWITCH MOTORS UTILIZING THE MANUAL #56 OR OTHER SIMILAR PUSH BUTTON ACTIVATION DEVICE. * NOTE THE WIRING CHANGE FROM THE STANDARD INSTALLATION PROVIDED WITH THE DOCUMENTATION ENCLOSED WITH EVERY ATLAS SWITCH. WHEN USING THE UNIVERSAL SWITCH CONTROL CIRCUIT YOU MUST REWIRE ANY EXISTING INSTALLATION TO MATCH THIS SCHEMATIC .

NOTE ALSO THE CONNECTION FOR SWITCH MACHINE POWER REQUIRED TO OPERATE YOUR SWITCH MOTORS NO LONGER IS CONNECTED TO THE #56 CONTROLLER. YOU MUST CONNECT SWITCH MACHINE POWER TO THE CIRCUIT BOARD J1 TERMINAL MARKED "SW PWR IN". IN ADDITION THE WIRING FROM THE #56 CONTROLLER THAT NORMALLY CONNECTED TO THE TWO OUTER MOST SCREW TERMINALS OF THE SWITCH MOTOR ARE NOW CONNECTED DIRECTLY TO THE CIRCUIT BOARD J1 TERMINALS " IN A " & " IN B " .

THE CONNECTIONS TO THE SWITCH MOTOR ARE NOW CONNECTED TO THE CIRCUIT BOARD J4 TERMINALS " OUT A " & " OUT B " .

TO OPERATE YOUR SWITCH MOTOR USING EITHER THE LIONEL ASC/3000, SC2 OR THE MTH AIU YOU MAY NEED TO REWIRE ANY EXISTING INSTALLATIONS. USING THE SCHEMATIC DIAGRAM TO THE RIGHT WILL SHOW THE CORRECT WIRING FOR PROPER OPERATION. YOU WILL NEED TO PROVIDE A SYSTEM GROUND (COM) TO THE ASC/AIU/SC2 COMMON CONTACT AND WIRE THE OUTPUTS (O) AND (T) RESPECTIVE PORTS TO THE # 6924 CIRCUIT BOARD ASSOCIATED WITH THE SWITCH MOTOR YOU ARE INSTALLING. THE (O) & (T) LEADS WILL CONNECT TO THE INPUTS OF THE # 6924 CIRCUIT BOARD LABELED "IN A" & "IN B". IF THE SWITCH MOTOR OPERATES TO THE WRONG DIRECTION SIMPLY REVERSE THE INPUT LEADS TO THE CIRCUIT BOARD OR REVERSE THE OUTPUT LEADS TO THE SWITCH MOTOR, (OUT A) AND (OUT B).

