

**GUARANTEED PRE-ORDER DUE DATE: WEDNESDAY DECEMBER 6<sup>TH</sup>, 2023**  
**CONSUMER EDITION**



# 'PREMIER' CATALOG

## FALL 2023



Atlas O Premier  
F40PH Locomotives  
Pages 8-11

# LOCOMOTIVES, ROLLING STOCK TRACK & ACCESSORIES



## PREMIER CATALOG - FALL 2023



**GUARANTEED PRE-ORDER DUE DATE:  
WEDNESDAY DECEMBER 6<sup>TH</sup> 2023**

October 2023

Dear O Scale Model Railroader,

Welcome to the Fall 2023 Atlas O Premier Catalog. Catalogs such as this one are the basis of Atlas' distinctive "guaranteed" pre-order system. Before the Research & Development department gives the final go ahead for production, Atlas announces to its customers the products we are preparing to make. This announcement comes in the form of our Atlas Model (HO & N) and Atlas O Premier Catalogs that provide our customers with the opportunity to arrange a guaranteed pre-order if placed by the given deadline. If possible, Atlas will try to fill orders placed after a given deadline, but these cannot be guaranteed. Occasionally, we offer 'Limited Availability' products for which we have speculated on order quantities and therefore these orders cannot be guaranteed. Either way, its best to place orders as soon as possible for your best chances at acquiring a selected product.

This catalog includes opportunities to reserve select Guaranteed Pre-Order Premier Locomotives as well as Master & Premier rolling stock. Atlas O continues the expansion of the O locomotive line with offerings of the Premier SD-45, as well as a new run of Premier F40PH Locomotives. All of these locomotive offerings will come equipped with MTH DCS, Proto-Sound 3.0!

This catalog also includes the release of several rolling stock models in the Master and Premier lines including: 3-Bay Centerflow Hoppers, 8,000 Gallon Tank Cars, Multi-Max Auto Carriers and more - with authentic prototypical paint schemes. We're also announcing new runs of PS-4750 Hoppers and Bay Window Cabooses in our Trainman line. The announcement of the Premier Bi-Level Gallery Cars represents the first release from the Atlas/MTH shared asset agreement - with more planned for the future.

Last, but not least, this 'Guaranteed Pre-Order Catalog' serves as a reminder to all our customers, of the extensive line of Atlas O track, accessories, trackside buildings, signal system and other structures that Atlas O has available on a day to day basis. Whether you're rehabilitating an existing layout, or building one from scratch, Atlas O customer service and sales representatives are ready to assist you in whatever way we can to make your layout a reality.

To remain updated on all Atlas O products and special announcements, sign up for the Atlas Insider Email at <https://shop.atlasrr.com>.

Happy Model Railroading,  
Drew Postle, Atlas Sales Manager

---

Products bearing American Refrigerator Transit; Chicago & Eastern Illinois (C&EI); Chicago and North Western Railway Company (CNW); The Denver & Rio Grande Western Railroad Company (D&RGW); Katy; Missouri-Kansas-Texas Railroad Company (MKT); Missouri Pacific (MP); Pacific Fruit Express (PFE); Southern Pacific (SP); St. Louis Southwestern Railway Company (SSW); Cotton Belt; Texas & Pacific (T&P); Union Pacific (UP); Union Pacific Fruit Express (UPFE); Western Pacific (WP) marks are made under trademark license from Union Pacific Railroad Company.

---

Atlas Model Railroad Co., Inc. • 378 Florence Ave., Hillside, NJ 07205 • USA • ph: 908-687-0880 • fax: 908-687-8857 / 908-851-2550 • [shop.atlasrr.com](https://shop.atlasrr.com)



# TABLE OF CONTENTS

**PRE-ORDER ANNOUNCEMENTS** **PAGE #**

**O SCALE** **ATLAS O PREMIER CATALOG ANNOUNCEMENTS  
LOCOMOTIVES, PASSENGER CARS & ROLLING STOCK**

ATLAS O PREMIER SD45 LOCOMOTIVE **NEW ATLAS O MODEL** ..... pgs.4-7

ATLAS O PREMIER F40PH LOCOMOTIVE **NEW PAINT SCHEMES** ..... pgs.8-11

ATLAS O PREMIER BI-LEVEL GALLERY CAR **NEW ATLAS O MODEL** ..... pgs.12-13

ATLAS O PREMIER ACF<sup>®</sup> 3-BAY CENTERFLOW HOPPER **NEW PAINT SCHEMES** ..... pgs.14-15

ATLAS O PREMIER 50' GUNDERSON HIGH-CUBE BOX CAR **NEW PAINT SCHEMES** ..... pgs.16-17

ATLAS O PREMIER 8,000 GALLON TANK CAR **NEW PAINT SCHEMES** ..... pgs.18-19

ATLAS MASTER<sup>®</sup> O 42' NSC COIL STEEL CAR **NEW PAINT SCHEMES & NEW ROAD NUMBERS** ..... pgs.20-21

ATLAS MASTER<sup>®</sup> O MULTI-MAX AUTO CARRIER **NEW PAINT SCHEMES** ..... pgs.22-23

ATLAS TRAINMAN<sup>®</sup> O PS-4750 COVERED HOPPER **NEW PAINT SCHEMES** ..... pgs.24-25

ATLAS TRAINMAN<sup>®</sup> O BAY WINDOW CABOOSE **NEW PAINT SCHEMES** ..... pgs.26-27

**ATLAS O TRACK & ACCESSORIES**

ATLAS O TURNTABLE ..... pgs.28

ATLAS O SIGNAL SYSTEM ..... pgs.29

ATLAS O TRACK, STRUCTURES & ACCESSORIES ..... pgs.30-31

## To Order, Please Contact Your Authorized Atlas Dealer

*All prices are in US dollars. Prices and dates are subject to change without notice. Atlas reserves the right to correct errors, change prices and modify designs without notice. Any product pricing errors and updates may be corrected at any time through notification of distributors, dealers and consumers on our website: [shop.atlasrr.com](http://shop.atlasrr.com).*

© 2023 Atlas Model Railroad Co., Inc.

Models depicted on cover are artistic renderings. Actual production models may vary.

Atlas Model Railroad Co., Inc. • 378 Florence Ave., Hillside, NJ 07205 • USA • ph: 908-687-0880 • fax: 908-687-8857 / 908-851-2550 • [shop.atlasrr.com](http://shop.atlasrr.com)



# PREMIER CATALOG FALL 2023 - LOCOMOTIVES

**GUARANTEED PRE-ORDER DUE DATE:  
WEDNESDAY DECEMBER 6<sup>TH</sup> 2023**



## ATLAS O PREMIER SD45 LOCOMOTIVE

Product Info: <https://shop.atlasrr.com/d-706-fall-2023-o-premier-catalog.aspx>



**NEW  
ATLAS O  
MODEL**



Norfolk & Western



Guilford/Springfield Terminal



CP Rail "Dual Flags"



# PREMIER CATALOG FALL 2023 - LOCOMOTIVES

**GUARANTEED PRE-ORDER DUE DATE:  
WEDNESDAY DECEMBER 6<sup>TH</sup> 2023**



## ATLAS O PREMIER SD45 LOCOMOTIVE

Product Info: <https://shop.atlasrr.com/d-706-fall-2023-o-premier-catalog.aspx>

*Matching cabooses available on pages 26-27.*



CSX\*



Southern Pacific "Speed Lettering"



Union Pacific "We Can Handle It"

\*CSX Licensed Product



# PREMIER CATALOG FALL 2023 - LOCOMOTIVES

**GUARANTEED PRE-ORDER DUE DATE:  
WEDNESDAY DECEMBER 6<sup>TH</sup> 2023**



## ATLAS O PREMIER SD45 LOCOMOTIVE

**Product Info:** <https://shop.atlasrr.com/d-706-fall-2023-o-premier-catalog.aspx>

**ESTIMATED ARRIVAL: 3rd Quarter 2024**

ORDER IN PIECES	3-RAIL ITEM	ROAD NAME	ROAD NUMBER	COLORS	MSRP / UNIT
	30138257	Norfolk & Western	1709	Blue/Gold	\$639.95
	30138258	Norfolk & Western	1722	Blue/Gold	\$639.95
	30138259	Guilford/Springfield Terminal	678	Gray/Orange	\$639.95
	30138260	Guilford/Springfield Terminal	686	Gray/Orange	\$639.95
	30138261	CP Rail "Dual Flags"	5493	Red/White	\$639.95
	30138262	CP Rail "Dual Flags"	5497	Red/White	\$639.95
	30138263	CSX*	8924	Gray/Blue	\$639.95
	30138264	CSX*	8929	Gray/Blue	\$639.95
	30138265	Southern Pacific "Speed Lettering"	8595	Gray/Scarlet	\$639.95
	30138266	Southern Pacific "Speed Lettering"	8614	Gray/Scarlet	\$639.95
	30138267	Union Pacific "We Can Handle It"	3603	Yellow/Gray	\$639.95
	30138268	Union Pacific "We Can Handle It"	3618	Yellow/Gray	\$639.95
<b>TOTAL PIECES ORDERED</b>					

Like the Pontiac GTO, the SD45 was a mid-60s General Motors muscle car. Stuffed under its brick-like hood was the largest diesel motor made up to that time, a turbo-charged, 20-cylinder, Electro-Motive Division model 645E. The Great Northern took delivery of the first SD45 in May of 1966 and promptly painted the nickname "Hustle Muscle" on its flanks. The name said it all: the SD45 was heavy freight power, intended for long trains and high speeds. And it had the muscular looks to match, with flared radiators capping a long body that filled every inch of its frame - as opposed to its baby brother, the SD40, which had an open "porch" at each end of the engine.

Unfortunately, the 20-cylinder motor turned out to have a major flaw: a tendency to break its own crankshaft. Even so, a large number of Class 1 railroads rostered the engine, with 1,260 units sold between 1966 and 1971. The Santa Fe, Burlington Northern, Pennsy, and Southern Pacific each owned more than 100 of the heavy freighters. Looking at the order quantities, one can see that the SD45 marked the beginning of a large-scale shift toward six-axle freight engines on American railroads. Before the late '60s, adding a third axle to a truck was mainly an expedient to spread out an engine's weight for service on lighter rail, particularly branch lines. But with the SD45 and its contemporaries, railroads began favoring the six-axle engine as a way to get more power on the rails for heavier mainline trains. Despite the initial crankshaft problems, many SD45s served their original owners for decades, as well as successor railroads like Conrail and the BNSF, and later went on to new lives at smaller, secondary roads.

\*CSX Licensed Product

\*\* Prices are subject to change due to board availability/cost.

Atlas Model Railroad Co., Inc. • 378 Florence Ave., Hillside, NJ 07205 • USA • ph: 908-687-0880 • fax: 908-687-8857 / 908-851-2550 • [shop.atlasrr.com](http://shop.atlasrr.com)



# PREMIER CATALOG FALL 2023 - LOCOMOTIVES

**GUARANTEED PRE-ORDER DUE DATE:  
WEDNESDAY DECEMBER 6<sup>TH</sup> 2023**



## ATLAS O PREMIER SD45 LOCOMOTIVE

**Product Info:** <https://shop.atlasrr.com/d-706-fall-2023-o-premier-catalog.aspx>

**ESTIMATED ARRIVAL: 3rd Quarter 2024**

ORDER IN PIECES	2-RAIL ITEM	ROAD NAME	ROAD NUMBER	COLORS	MSRP / UNIT
	30138269	Norfolk & Western	1709	Blue/Gold	\$639.95
	30138270	Norfolk & Western	1722	Blue/Gold	\$639.95
	30138271	Guilford/Springfield Terminal	678	Gray/Orange	\$639.95
	30138272	Guilford/Springfield Terminal	686	Gray/Orange	\$639.95
	30138273	CP Rail "Dual Flags"	5493	Red/White	\$639.95
	30138274	CP Rail "Dual Flags"	5497	Red/White	\$639.95
	30138275	CSX*	8924	Gray/Blue	\$639.95
	30138276	CSX*	8929	Gray/Blue	\$639.95
	30138277	Southern Pacific "Speed Lettering"	8595	Gray/Scarlet	\$639.95
	30138278	Southern Pacific "Speed Lettering"	8614	Gray/Scarlet	\$639.95
	30138279	Union Pacific "We Can Handle It"	3603	Yellow/Gray	\$639.95
	30138280	Union Pacific "We Can Handle It"	3618	Yellow/Gray	\$639.95
<b>TOTAL PIECES ORDERED</b>					

### Features:

- Intricately Detailed ABS Body
- Die-Cast Truck Sides, Pilots and Fuel Tank
- Metal Chassis
- Metal Handrails and Decorative Horn
- Moveable Roof Fans
- Metal Body Side Grilles
- Detachable Snow Plow
- (2) Engineer Cab Figures
- Authentic Paint Scheme
- Metal Wheels, Axles and Gears
- (2) Remote Controlled Proto-Couplers
- Kadee Compatible Coupler Mounting Pads
- Prototypical Rule 17 Lighting
- Directionally Controlled Constant Voltage LED Headlight
- Lighted Cab Interior
- Illuminated Number Boards
- Lighted Marker Lights
- 2 Rail models have fixed pilots
- (2) Precision Flywheel Equipped Motors
- Operating Smoke Unit
- Onboard DCC Receiver
- Locomotive Speed Control In Scale MPH Increments
- 1:48 Scale Proportions
- Proto-Sound 3.0 With The Digital Command System Featuring: Freight Yard Proto-Effects
- Unit Measures: 17 1/4" x 3 3/4" x 2 3/4"
- 3-Rail: Operates On 0-36 Curves
- 2-Rail: 36" Minimum Radius

\*CSX Licensed Product

\*\* Prices are subject to change due to board availability/cost.

Atlas Model Railroad Co., Inc. • 378 Florence Ave., Hillside, NJ 07205 • USA • ph: 908-687-0880 • fax: 908-687-8857 / 908-851-2550 • [shop.atlasrr.com](https://shop.atlasrr.com)



# PREMIER CATALOG FALL 2023 - LOCOMOTIVES

**GUARANTEED PRE-ORDER DUE DATE:  
WEDNESDAY DECEMBER 6<sup>TH</sup> 2023**



## ATLAS O PREMIER F40PH LOCOMOTIVE

**NEW  
PAINT  
SCHEMES**

Product Info: <https://shop.atlasrr.com/d-706-fall-2023-o-premier-catalog.aspx>



Metra (Chicago Unit)



Metra (RTA Heritage Unit)



Metra (New Image)





## PREMIER CATALOG FALL 2023 - LOCOMOTIVES

**GUARANTEED PRE-ORDER DUE DATE:  
WEDNESDAY DECEMBER 6<sup>TH</sup> 2023**



### ATLAS O PREMIER F40PH LOCOMOTIVE

**Product Info:** <https://shop.atlasrr.com/d-706-fall-2023-o-premier-catalog.aspx>

*Perfect match for our Premier Bi-Level Gallery Cars  
featured on pages 12-13.*



Music City Star



Maine Eastern  
*matching passenger cars coming soon*



# PREMIER CATALOG FALL 2023 - LOCOMOTIVES

**GUARANTEED PRE-ORDER DUE DATE:  
WEDNESDAY DECEMBER 6<sup>TH</sup> 2023**



## ATLAS O PREMIER F40PH LOCOMOTIVE

**Product Info:** <https://shop.atlasrr.com/d-706-fall-2023-o-premier-catalog.aspx>

The F40PH was designed for Amtrak as a commuter and medium-haul engine, to complement its long-haul fleet of SDP40F diesels. But when the SDP40Fs fell from grace due to poor reliability, a rough ride and derailment issues, the F40PH became the backbone of Amtrak's locomotive fleet for decades.

Introduced in 1976, the F40PH was essentially a passenger version of the mid-1960s GP40 freight diesel. It shared the earlier engine's turbocharged V-16 3000 hp (later updated to 3200 hp) model 645 motor, and added an HEP (head-end power) generator for passenger lights, heat and air conditioning. An enclosed cowl afforded en-route, all-weather access to the F40PH's engine room if necessary. In short order, commuter railroads across the United States and Canada followed Amtrak into EMD's order books for this versatile, reliable engine.

Did You Know? The F40PHs were nicknamed "Screamers" because their engines run at a high rpm even at rest, in order to power the HEP generator that keeps the passenger cars comfortable.



### Features:

- Intricately Detailed, Durable ABS Body
- Die-Cast Truck Sides, Pilots and Fuel Tank
- Metal Chassis
- Metal Handrails and Horn
- Moveable Roof Fans
- Metal Body Side Grilles
- Detachable Snow Plow
- (2) Handpainted Engineer Cab Figures
- Authentic Paint Scheme
- Metal Wheels, Axles and Gears
- O Scale Kadee-Compatible Coupler Mounting Pads
- Prototypical Rule 17 Lighting
- Directionally Controlled Constant Voltage LED Headlights
- Lighted LED Cab Interior Light
- Illuminated LED Number Boards
- Lighted LED Marker Lights
- Operating LED Ditch Lights
- 2 Rail models have fixed pilots
- (2) Precision Flywheel-Equipped Motors
- Operating ProtoSmoke Diesel Exhaust
- Onboard DCC/DCS Decoder
- Locomotive Speed Control In Scale MPH Increments
- 1:48 Scale Proportions
- (2) Remote-Controlled Proto-Couplers
- Proto-Sound 3.0 With The Digital Command System Featuring
- Passenger Station Proto-Effects
- Unit Measures: 15 1/4 x 2 1/2 x 4 1/16
- 3-Rail: Operates On O-36 Curves
- 2-Rail: 36" Minimum Radius

Officially licensed by Metra®

Atlas Model Railroad Co., Inc. • 378 Florence Ave., Hillside, NJ 07205 • USA • ph: 908-687-0880 • fax: 908-687-8857 / 908-851-2550 • [shop.atlasrr.com](https://shop.atlasrr.com)



# PREMIER CATALOG FALL 2023 - LOCOMOTIVES

**GUARANTEED PRE-ORDER DUE DATE:  
WEDNESDAY DECEMBER 6<sup>TH</sup> 2023**



## ATLAS O PREMIER F40PH LOCOMOTIVE

**Product Info:** <https://shop.atlasrr.com/d-706-fall-2023-o-premier-catalog.aspx>

**ESTIMATED ARRIVAL: 3rd Quarter 2024**

ORDER IN PIECES	3-RAIL ITEM	ROAD NAME	ROAD NUMBER	COLORS	MSRP / UNIT
	30138281	Metra (Chicago Unit)	104	Blue/White/Orange	\$639.95
	30138282	Metra (RTA Heritage Unit)	100	Blue/Brown/Orange	\$639.95
	30138283	Metra (New Image)	106	Blue/Orange/Black	\$639.95
	30138284	Metra (New Image)	149	Blue/Orange/Black	\$639.95
	30138285	Music City Star	120	Silver/Blue/Red	\$639.95
	30138286	Music City Star	122	Silver/Blue/Red	\$639.95
	30138287	Maine Eastern	265	Green/Yellow/White	\$639.95
	30138288	Maine Eastern	291	Green/Yellow/White	\$639.95
<b>TOTAL PIECES ORDERED</b>					

**ESTIMATED ARRIVAL: 3rd Quarter 2024**

ORDER IN PIECES	2-RAIL ITEM	ROAD NAME	ROAD NUMBER	COLORS	MSRP / UNIT
	30138289	Metra (Chicago Unit)	104	Blue/White/Orange	\$639.95
	30138290	Metra (RTA Heritage Unit)	100	Blue/Brown/Orange	\$639.95
	30138291	Metra (New Image)	106	Blue/Orange/Black	\$639.95
	30138292	Metra (New Image)	149	Blue/Orange/Black	\$639.95
	30138293	Music City Star	120	Silver/Blue/Red	\$639.95
	30138294	Music City Star	122	Silver/Blue/Red	\$639.95
	30138295	Maine Eastern	265	Green/Yellow/White	\$639.95
	30138296	Maine Eastern	291	Green/Yellow/White	\$639.95
<b>TOTAL PIECES ORDERED</b>					

*Perfect match for our Premier Bi-Level Gallery Cars  
featured on pages 12-13.*

Officially licensed by Metra®

\*\* Prices are subject to change due to board availability/cost.

Atlas Model Railroad Co., Inc. • 378 Florence Ave., Hillside, NJ 07205 • USA • ph: 908-687-0880 • fax: 908-687-8857 / 908-851-2550 • [shop.atlasrr.com](https://shop.atlasrr.com)



# PREMIER CATALOG FALL 2023- ROLLING STOCK

**GUARANTEED PRE-ORDER DUE DATE:  
WEDNESDAY DECEMBER 6<sup>TH</sup> 2023**



## ATLAS O PREMIER BI-LEVEL GALLERY CAR

**NEW  
ATLAS O  
MODEL**

Product Info: <https://shop.atlasrr.com/d-706-fall-2023-o-premier-catalog.aspx>

### 4-PACKS



Metra/Metra "Bike Car" 70' Bi-Level Gallery Car 4 pack



Metra/BNSF 70' Bi-Level Gallery Car 4 pack

### 2-PACKS



Metra (New Image) 70' Bi-Level Gallery Car 2 pack



Metra/BNSF 70' Bi-Level Gallery Car 2 pack



Music City Express 70' Bi-Level Gallery Car 2 pack

Officially licensed by Metra®

Atlas Model Railroad Co., Inc. • 378 Florence Ave., Hillside, NJ 07205 • USA • ph: 908-687-0880 • fax: 908-687-8857 / 908-851-2550 • [shop.atlasrr.com](http://shop.atlasrr.com)



# PREMIER CATALOG FALL 2023- ROLLING STOCK

**GUARANTEED PRE-ORDER DUE DATE:  
WEDNESDAY DECEMBER 6<sup>TH</sup> 2023**



## ATLAS O PREMIER BI-LEVEL GALLERY CAR

Product Info: <https://shop.atlasrr.com/d-706-fall-2023-o-premier-catalog.aspx>

### 70' BI-LEVEL GALLERY CAR 4 PACKS - ESTIMATED ARRIVAL: 2nd Quarter 2024

ORDER IN PIECES	3-RAIL ITEM	ROAD NAME	ROAD NUMBER	COLORS	MSRP / UNIT
	3001666	Metra/Metra "Bike Car" 70' Bi-Level Gallery Car 4 pack includes: Metra "Bike Car" 7791, Metra 6127, Metra "Bike Car"7801, Metra 8502		Blue/Gray Red & Silver/Blue	\$574.95
	3001668	Metra/BNSF 70' Bi-Level Gallery Car 4 pack includes: Metra/BNSF 751,758, 774, 804		Silver/Blue/Orange	\$574.95
<b>TOTAL PIECES ORDERED</b>					

### 70' BI-LEVEL GALLERY CAR 2 PACKS - ESTIMATED ARRIVAL: 2nd Quarter 2024

ORDER IN PIECES	3-RAIL ITEM	ROAD NAME	ROAD NUMBER	COLORS	MSRP / UNIT
	3001667	Metra (New Image) 70' Bi-Level Gallery Car 2 pack includes: Metra (New Image) 7661, 7664		Silver/Blue/Orange/Black	\$289.95
	3001669	Metra/BNSF 70' Bi-Level Gallery Car 2 pack includes: Metra/BNSF 747, 765		Silver/Blue/Orange	\$289.95
	3001670	Music City Express 70' Bi-Level Gallery Car 2 pack includes: Music City Express 500, 401		Silver/Blue/Red	\$289.95
	3001671	Music City Express 70' Bi-Level Gallery Car 2 pack includes: Music City Express 502, 400		Silver/Blue/Red	\$289.95
<b>TOTAL PIECES ORDERED</b>					

The bi-level gallery car is an icon of American commuter rail service, originally designed by Pullman Standard in the 1950s these bi-level gallery car designs have since been produced by five other major rail car manufactures. The bi-level gallery cars are still in service today and can be seen with secondary owners all over the united states. Chicago's Metra operates the largest fleet of these cars today.

Features:

- Durable ABS Intricately Detailed Bodies
- Metal Wheels and Axles
- Overhead Interior Lighting
- Die-Cast 4-Wheel Trucks
- Operating Die-Cast Metal Couplers
- Some models are shadowlined to represent corrugation, as appropriate per road name
- End-of-Car Diaphragms
- Separate Metal Handrails
- Fast-Angle Wheel Sets
- Needle-Point Axles
- Detailed Car Interiors
- 1:48 Scale Dimensions
- 2-Car Sets Feature (2) Coaches
- Stamped Metal Floors
- Detailed Car Undercarriage
- Unit Measures: 38" x 2 1/2" x 4 1/8"
- Operates On 0-42 Curves

*Available in 3-Rail Only.*

*Perfect match for our Premier F40PH Locomotives featured on pages 8-11.*

Officially licensed by Metra®

Atlas Model Railroad Co., Inc. • 378 Florence Ave., Hillside, NJ 07205 • USA • ph: 908-687-0880 • fax: 908-687-8857 / 908-851-2550 • [shop.atlasrr.com](http://shop.atlasrr.com)



# PREMIER CATALOG FALL 2023- ROLLING STOCK

**GUARANTEED PRE-ORDER DUE DATE:  
WEDNESDAY DECEMBER 6<sup>TH</sup> 2023**



## ATLAS O PREMIER ACF® 3-BAY CENTERFLOW HOPPER

**NEW  
PAINT  
SCHEMES**

Product Info: <https://shop.atlasrr.com/d-706-fall-2023-o-premier-catalog.aspx>



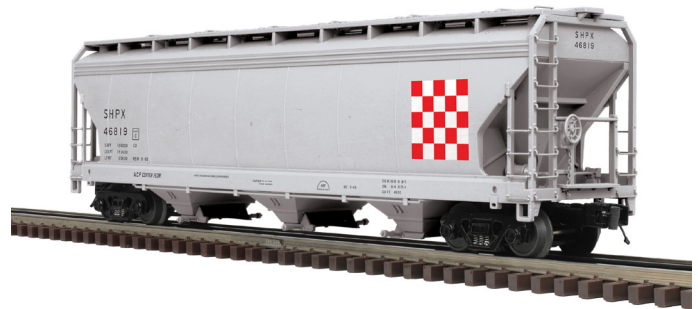
Canadian National/WC



Erie Lackawanna



Georgia Pacific



Ralston Purina



Scclair



Union Pacific/SP Patch



# PREMIER CATALOG FALL 2023- ROLLING STOCK

**GUARANTEED PRE-ORDER DUE DATE:  
WEDNESDAY DECEMBER 6<sup>TH</sup> 2023**



## ATLAS O PREMIER ACF® 3-BAY CENTERFLOW HOPPER

**Product Info:** <https://shop.atlasrr.com/d-706-fall-2023-o-premier-catalog.aspx>

**ESTIMATED ARRIVAL: 2nd Quarter 2024**

ORDER IN PIECES	3-RAIL ITEM	ROAD NAME	ROAD NUMBER	COLORS	MSRP / UNIT
	3001623	Canadian National/WC	87017, 87030	Brown/White	\$79.95
	3001624	Erie Lackawanna	20102, 20110	Gray/Black	\$79.95
	3001625	Georgia Pacific	1004, 1005	Blue/White	\$79.95
	3001626	Ralston Purina	46799, 46811	Gray/Red	\$79.95
	3001627	Sclair	46501, 46515	Orange/White/Black	\$79.95
	3001628	Union Pacific/SP Patch	496490, 496599	Gray/Black	\$79.95
<b>TOTAL PIECES ORDERED</b>					

**ESTIMATED ARRIVAL: 2nd Quarter 2024**

ORDER IN PIECES	2-RAIL ITEM	ROAD NAME	ROAD NUMBER	COLORS	MSRP / UNIT
	3002623	Canadian National/WC	87017, 87030	Brown/White	\$84.95
	3002624	Erie Lackawanna	20102, 20110	Gray/Black	\$84.95
	3002625	Georgia Pacific	1004, 1005	Blue/White	\$84.95
	3002626	Ralston Purina	46799, 46811	Gray/Red	\$84.95
	3002627	Sclair	46501, 46515	Orange/White/Black	\$84.95
	3002628	Union Pacific/SP Patch	496490, 496599	Gray/Black	\$84.95
<b>TOTAL PIECES ORDERED</b>					

Although covered hoppers had achieved widespread use by the 1950s, it wasn't until the following decade that they began to carry North America's grain harvest. Prior to the 1960s, U.S. and Canadian farmers sent their wheat and other grains to market in 40' box cars. All that changed with American Car and Foundry's (ACF's) introduction of the Centerflow covered hopper in 1961, followed the next year by Pullman-Standard's competitive PS-2CD covered hopper. Prior to the Centerflow, the typical covered hopper was little more than a coal hopper with a roof. Dry products such as salt were loaded through roof hatches and unloaded by gravity through doors in the floor. Like most freight cars of their era, these cars had a center sill that led to problems in emptying the car. Typically some of the load would cake or "bridge" on the center sill, and the car would have to be vibrated to loosen the mess and achieve full unloading. This vibration tended to shorten the life of the car.

The Centerflow's key innovation was the elimination of the center sill by relocating the car's main support beams to the bottom edge of each side. This enabled the discharge hopper doors to be located along the centerline of the car, allowing for easier, more complete unloading and banishing the problem of caking on the center sill. The Centerflow was the first larger-capacity covered hopper designed for grain and products of similar density. By the 1980s, ACF's Centerflow, along with covered grain hoppers from other builders, had spelled the end of the 40' box car in grain service. In addition to grain, Centerflows found work hauling a variety of other light to medium-density dry commodities, including salt, clay, chemicals, phosphates and other minerals.

### Features:

- Intricately Detailed Durable ABS Body
- Metal Wheels and Axles
- Die-Cast 4-Wheel Trucks
- Operating Die-Cast Metal Couplers
- Colorful, Attractive Paint Schemes
- Fast-Angle Wheel Sets
- Needle-Point Axles
- 1:48 Scale Dimensions
- Unit Measures: 13 7/8" x 2 11/16" x 3 7/8"
- Operates On 0-31 Curves (3-Rail)
- Minimum Radius Curve (2-rail): 36"

Atlas Model Railroad Co., Inc. • 378 Florence Ave., Hillside, NJ 07205 • USA • ph: 908-687-0880 • fax: 908-687-8857 / 908-851-2550 • [shop.atlasrr.com](https://shop.atlasrr.com)



# PREMIER CATALOG FALL 2023- ROLLING STOCK

**GUARANTEED PRE-ORDER DUE DATE:  
WEDNESDAY DECEMBER 6<sup>TH</sup> 2023**



## ATLAS O PREMIER 50' GUNDERSON HIGH-CUBE BOX CAR

**NEW  
PAINT  
SCHEMES**

Product Info: <https://shop.atlasrr.com/d-706-fall-2023-o-premier-catalog.aspx>



Burlington Northern



Montana Rail Link



York Rail



TTX (TOFX)



TTX (As Delivered)



TTX (Forward Thinking Patch)

### LIMITED EDITION 3-PACKS



TTX (TOFX)



TTX (As Delivered)



TTX (Forward Thinking Patch)



CSX\* (B&O Heritage)



CSX\* (Chesiee System Heritage)



CSX\* (C&O Heritage) \*CSX Licensed Product

Atlas Model Railroad Co., Inc. • 378 Florence Ave., Hillside, NJ 07205 • USA • ph: 908-687-0880 • fax: 908-687-8857 / 908-851-2550 • [shop.atlasrr.com](http://shop.atlasrr.com)





# PREMIER CATALOG FALL 2023- ROLLING STOCK

**GUARANTEED PRE-ORDER DUE DATE:  
WEDNESDAY DECEMBER 6<sup>TH</sup> 2023**



## ATLAS O PREMIER 50' GUNDERSON HIGH-CUBE BOX CAR

Product Info: <https://shop.atlasrr.com/d-706-fall-2023-o-premier-catalog.aspx>

**ESTIMATED ARRIVAL: 2nd Quarter 2024**

ORDER IN PIECES	3-RAIL ITEM	ROAD NAME	ROAD NUMBER	COLORS	MSRP / UNIT
<b>NEW PAINT SCHEMES</b>					
	3001635	Burlington Northern	287093, 278168	Green	\$79.95
	3001636	Montana Rail Link	11009, 11033	Blue	\$79.95
	3001637	York Rail	20042, 20120	Brown	\$79.95
	3001638	TTX (TOFX)	887062, 887084	Gray	\$79.95
	3001639	TTX (As-Delivered)	504567, 504609	Yellow/Black	\$79.95
	3001640	TTX (Forward Thinking Patch)	504633, 504695	Yellow/Black	\$79.95
<b>LIMITED EDITION 3 PACKS - NEW PAINT SCHEMES</b>					
	3001641	TTX (includes TTX (TOFX 887085, As Delivered 505218, Forward Thinking 504650 )		Yellow/Black/Gray	\$239.85
	3001642	CSX* Heritage (includes CSX B&O Heritage 101869, CSX C&O Heritage 101827, CSX Chessie System Heritage 10973)		Yellow/Blue	\$239.85
<b>TOTAL PIECES ORDERED</b>					

**ESTIMATED ARRIVAL: 2nd Quarter 2024**

ORDER IN PIECES	2-RAIL ITEM	ROAD NAME	ROAD NUMBER	COLORS	MSRP / UNIT
<b>NEW PAINT SCHEMES</b>					
	3002635	Burlington Northern	287093, 278168	Green	\$84.95
	3002636	Montana Rail Link	11009, 11033	Blue	\$84.95
	3002637	York Rail	20042, 20120	Brown	\$84.95
	3002638	TTX (TOFX)	887062, 887084	Gray	\$84.95
	3002639	TTX (As-Delivered)	504567, 504609	Yellow/Black	\$84.95
	3002640	TTX (Forward Thinking Patch)	504633, 504695	Yellow/Black	\$84.95
<b>LIMITED EDITION 3 PACKS - NEW PAINT SCHEMES</b>					
	3002641	TTX (includes TTX (TOFX 887085, As Delivered 505218, Forward Thinking 504650 )		Yellow/Black/Gray	\$254.85
	3002642	CSX* Heritage (includes CSX B&O Heritage 101869, CSX C&O Heritage 101827, CSX Chessie System Heritage 10973)		Yellow/Blue	\$254.85
<b>TOTAL PIECES ORDERED</b>					

With an interior height of about 13 feet - 2 feet more than a standard box car - this car is known as a "hi-roof" or "high cube" car for its high cubic capacity. White end panels make railroad crews aware of its extra height, which prevents it from traveling in some areas.

This 50' 100-ton car is designed specifically for the modern printing industry, which uses large rolls of paper too big for standard box cars. Sideto- floor joints and doorframes are reinforced to accommodate the heavy weight of paper rolls. Longer 60' versions of this design are widely used for transporting parts for car manufacturing.

**Features:**

- Intricately Detailed, Durable ABS Body
- Stamped Metal Floors
- Metal Wheels and Axles
- Die-Cast 4-Wheel Trucks
- Fast-Angle Wheel Sets
- Needle-Point Axles
- (2) Operating Die-Cast Metal Couplers
- Detailed Brake Wheel
- Separate Metal Handrails
- Sliding Car Doors
- 1:48 Scale Dimensions
- Unit Measures: 14 1/2" x 2 5/8" x 4 3/16"
- Operates On 0-31 Curves (3-Rail)

*\*CSX Licensed Product*

Atlas Model Railroad Co., Inc. • 378 Florence Ave., Hillside, NJ 07205 • USA • ph: 908-687-0880 • fax: 908-687-8857 / 908-851-2550 • [shop.atlasrr.com](https://shop.atlasrr.com)



# PREMIER CATALOG FALL 2023- ROLLING STOCK

**GUARANTEED PRE-ORDER DUE DATE:  
WEDNESDAY DECEMBER 6<sup>TH</sup> 2023**



## ATLAS O PREMIER 8,000 GALLON TANK CAR

**NEW  
PAINT  
SCHEMES**

Product Info: <https://shop.atlasrr.com/d-706-fall-2023-o-premier-catalog.aspx>



CGTX



GATX "Service Driven"



Hooker Chemicals (GATX)



Southern Star Lard (GATX)



UTLX



Wyandotte Chemicals (SHPX)



# PREMIER CATALOG FALL 2023- ROLLING STOCK

**GUARANTEED PRE-ORDER DUE DATE:  
WEDNESDAY DECEMBER 6<sup>TH</sup> 2023**



## ATLAS O PREMIER 8,000 GALLON TANK CAR

**Product Info:** <https://shop.atlasrr.com/d-706-fall-2023-o-premier-catalog.aspx>

**ESTIMATED ARRIVAL: 2nd Quarter 2024**

ORDER IN PIECES	3-RAIL ITEM	ROAD NAME	ROAD NUMBER	COLORS	MSRP/UNIT
<b>NEW PAINT SCHEMES</b>					
	3001629	CGTX	22017, 22050	Black/White/Blue	\$79.95
	3001630	GATX "Service Driven"	23820, 23826	Black/White/Blue	\$79.95
	3001631	Hooker Chemicals (GATX)	24922, 24930	Orange/White/Black	\$79.95
	3001632	Southern Star Lard (GATX)	74404, 74412	Silver/Red/Black	\$79.95
	3001633	UTLX	630107, 630109	White/Black	\$79.95
	3001634	Wyandotte Chemicals (SHPX)	3984, 3992	Blue/Yellow/White	\$79.95
<b>TOTAL PIECES ORDERED</b>					

**ESTIMATED ARRIVAL: 2nd Quarter 2024**

ORDER IN PIECES	2-RAIL ITEM	ROAD NAME	ROAD NUMBER	COLORS	MSRP/UNIT
<b>NEW PAINT SCHEMES</b>					
	3002629	CGTX	22017, 22050	Black/White/Blue	\$84.95
	3002630	GATX "Service Driven"	23820, 23826	Black/White/Blue	\$84.95
	3002631	Hooker Chemicals (GATX)	24922, 24930	Orange/White/Black	\$84.95
	3002632	Southern Star Lard (GATX)	74404, 74412	Silver/Red/Black	\$84.95
	3002633	UTLX	630107, 630109	White/Black	\$84.95
	3002634	Wyandotte Chemicals (SHPX)	3984, 3992	Blue/Yellow/White	\$84.95
<b>TOTAL PIECES ORDERED</b>					

For most of the steam and early diesel eras, tank cars followed a standard design: an 8,000-11,000 gallon tank perched on a flatcar-like underframe. Beginning in the mid-1950s, however, a new design took hold: the tank itself became the structural backbone of the car, eliminating the need for a full-length underframe and making bigger tank diameters possible. But not every shipper needed the much larger capacities that the new tank cars offered. Hence the advent of these "beer can" tank cars in the mid-1960s, with capacities similar to pre-war tankers. They proved ideal for customers who didn't want larger shipments, and also for transporting a wide variety of heavier, denser liquids including industrial acids and foodstuffs. For modelers, they're an ideal counterpoint to longer cars in a modern freight train.

**Features:**

- Intricately Detailed, Durable ABS Body
- Metal Wheels and Axles
- Die-Cast 4-Wheel Trucks
- Needle-Point Axles
- Operating Die-Cast Metal Couplers
- Fast-Angle Wheel Sets
- O Scale Kadee-Compatible Coupler Mounting Pads
- Detailed Brake Wheel
- Separate Metal Handrails
- 1:48 Scale Dimensions
- Unit Measures: 9 1/16 x 2 3/4 x 3 7/8
- Operates On 0-27 Curves (3-Rail)



# PREMIER CATALOG FALL 2023- ROLLING STOCK

**GUARANTEED PRE-ORDER DUE DATE:  
WEDNESDAY DECEMBER 6<sup>TH</sup> 2023**



## ATLAS MASTER® O 42' NSC COIL STEEL CAR

**NEW  
PAINT SCHEMES &  
NEW ROAD  
NUMBERS**

**Product Info:** <https://shop.atlasrr.com/d-706-fall-2023-o-premier-catalog.aspx>



AOK (ex-CSXT)



FURX (ex-NOKL)



GTW (CN web address)



NS Conspic Stripes (WLE Hood CS 19)



NS (WLE Hood CS 19)



CAGY (ServerCorr)



KCS



# PREMIER CATALOG FALL 2023- ROLLING STOCK

**GUARANTEED PRE-ORDER DUE DATE:  
WEDNESDAY DECEMBER 6<sup>TH</sup> 2023**



## ATLAS MASTER® O 42' NSC COIL STEEL CAR

Product Info: <https://shop.atlasrr.com/d-706-fall-2023-o-premier-catalog.aspx>

**ESTIMATED ARRIVAL: 2nd Quarter 2024**

ORDER IN PIECES	3-RAIL ITEM	ROAD NAME	ROAD NUMBER	COLORS	MSRP / UNIT
<b>NEW PAINT SCHEMES</b>					
	3001734	AOK (ex-CSXT)	494507, 494502, 494606, 494621	Gray/Black/Yellow	\$94.95
	3001735	FURX (ex-NOKL)	382407, 382411, 382420, 382426	Red/White/Yellow	\$94.95
	3001736	GTW (CN web address)	187411, 187441, 187482, 187526	Brown/White/Yellow	\$94.95
	3001737	NS Conspic Stripes (WLE Hood CS 19)	165714, 165784	Gray/Black/Yellow	\$94.95
	3001738	NS (WLE Hood CS 19)	165820, 165841	Gray/Black	\$94.95
<b>NEW ROAD NUMBERS</b>					
	3001739	CAGY (ServerCorr)	7002, 7008, 7010, 7032	Red/Blue/White	\$94.95
	3001740	KCS	720017, 720023, 720048, 720133	Gray/Black/Red/Yellow	\$94.95
<b>TOTAL PIECES ORDERED</b>					

**ESTIMATED ARRIVAL: 2nd Quarter 2024**

ORDER IN PIECES	2-RAIL ITEM	ROAD NAME	ROAD NUMBER	COLORS	MSRP / UNIT
<b>NEW PAINT SCHEMES</b>					
	3002734	AOK (ex-CSXT)	494507, 494502, 494606, 494621	Gray/Black/Yellow	\$99.95
	3002735	FURX (ex-NOKL)	382407, 382411, 382420, 382426	Red/White/Yellow	\$99.95
	3002736	GTW (CN web address)	187411, 187441, 187482, 187526	Brown/White/Yellow	\$99.95
	3002737	NS Conspic Stripes (WLE Hood CS 19)	165714, 165784	Gray/Black/Yellow	\$99.95
	3002738	NS (WLE Hood CS 19)	165820, 165841	Gray/Black	\$99.95
<b>NEW ROAD NUMBERS</b>					
	3002739	CAGY (ServerCorr)	7002, 7008, 7010, 7032	Red/Blue/White	\$99.95
	3002740	KCS	720017, 720023, 720048, 720133	Gray/Black/Red/Yellow	\$99.95
<b>TOTAL PIECES ORDERED</b>					

The increased volume of coiled steel transportation gave rise to a new purpose-built freight car. Previously rolls of coiled-steel had generally traveled in specially equipped gondola cars. In the 1960s a lighter type of car emerged specifically for hauling coils of steel in an integral trough. The car type gained popularity and eventually over 17,000 cars were built. Atlas' model replicates a 42' design with a distinctive fishbelly side sill.

### Features:

- Prototypical painting and lettering
- See-through walks
- Removable hood
- Inside floor detail
- Cut-levers
- Includes 4 coils (2 small & 2 large)
- Minimum Diameter Curve (3-rail): 0-42
- Minimum Radius Curve (2-rail): 36"

Atlas Model Railroad Co., Inc. • 378 Florence Ave., Hillside, NJ 07205 • USA • ph: 908-687-0880 • fax: 908-687-8857 / 908-851-2550 • [shop.atlasrr.com](https://shop.atlasrr.com)



# PREMIER CATALOG FALL 2023- ROLLING STOCK

**GUARANTEED PRE-ORDER DUE DATE:  
WEDNESDAY DECEMBER 6<sup>TH</sup> 2023**



## ATLAS MASTER® O MULTI-MAX AUTO CARRIER

**NEW  
PAINT  
SCHEMES**

Product Info: <https://shop.atlasrr.com/d-706-fall-2023-o-premier-catalog.aspx>



BNSF Black Wedge

CN-GTW



CP Beaver

CSX\*



TTX



*\*CSX Licensed Product*



# PREMIER CATALOG FALL 2023- ROLLING STOCK

**GUARANTEED PRE-ORDER DUE DATE:  
WEDNESDAY DECEMBER 6<sup>TH</sup> 2023**



## ATLAS MASTER® O MULTI-MAX AUTO CARRIER

Product Info: <https://shop.atlasrr.com/d-706-fall-2023-o-premier-catalog.aspx>

**ESTIMATED ARRIVAL: 2nd Quarter 2024**

ORDER IN PIECES	3-RAIL ITEM	ROAD NAME	ROAD NUMBER	COLORS	MSRP/ UNIT
<b>NEW PAINT SCHEMES</b>					
	3001495	BNSF Black Wedge	694664, 694759, 694694, 694746	Orange/Silver	\$139.95
	3001496	CN-GTW	695799, 695790, 695787, 695768	Yellow/Silver	\$139.95
	3001497	CP Beaver	697886, 697950, 697882, 697974	Yellow/Silver	\$139.95
	3001498	CSX*	694623, 694585, 694540, 694466	Yellow/Silver	\$139.95
	3001499	TTX	695651, 695646, 695638, 695623	Yellow/Silver	\$139.95
<b>TOTAL PIECES ORDERED</b>					

**ESTIMATED ARRIVAL: 2nd Quarter 2024**

ORDER IN PIECES	2-RAIL ITEM	ROAD NAME	ROAD NUMBER	COLORS	MSRP/ UNIT
<b>NEW PAINT SCHEMES</b>					
	3002495	BNSF Black Wedge	694664, 694759, 694694, 694746	Orange/Silver	\$144.95
	3002496	CN-GTW	695799, 695790, 695787, 695768	Yellow/Silver	\$144.95
	3002497	CP Beaver	697886, 697950, 697882, 697974	Yellow/Silver	\$144.95
	3002498	CSX*	694623, 694585, 694540, 694466	Yellow/Silver	\$144.95
	3002499	TTX	695651, 695646, 695638, 695623	Yellow/Silver	\$144.95
<b>TOTAL PIECES ORDERED</b>					

In 2013, Greenbrier Companies introduced their new design of 89' auto rack, the Multi-Max™. The new design allows for changing configurations from a Bi-Level to a Tri-Level (and back) without adding or removing decks. The racks are fully compatible with existing 89' auto racks. To this date, most of the racks have been built on Greenbrier Companies' own specially designed 89' flat cars. These cars are commonly seen in cuts of other similar autorack cars or a solid unit train of autorack cars. Currently, almost 10,000 cars (with racks) are running on North American rails.

**Features:**

- Designed in the USA
- True 1/4" scale details and dimensions
- Newly tooled trucks
- Separately-applied wire grab irons
- Highly detailed side screens to maximize prototypical appearance in scale
- Accurate painting and lettering
- Minimum diameter curve: 0-72 (3-Rail)
- Minimum radius curve: 36" (2-Rail)

*\*CSX Licensed Product*



# PREMIER CATALOG FALL 2023- ROLLING STOCK

**GUARANTEED PRE-ORDER DUE DATE:  
WEDNESDAY DECEMBER 6<sup>TH</sup> 2023**



## ATLAS TRAINMAN® O PS-4750 COVERED HOPPER

**NEW  
PAINT  
SCHEMES**

Product Info: <https://shop.atlasrr.com/d-706-fall-2023-o-premier-catalog.aspx>



ADM



Ag Processing (AGP)



Landmark



Michigan Elevator Exchange



MFA Inc.



Reading & Northern





# PREMIER CATALOG FALL 2023- ROLLING STOCK

**GUARANTEED PRE-ORDER DUE DATE:  
WEDNESDAY DECEMBER 6<sup>TH</sup> 2023**



## ATLAS TRAINMAN® O PS-4750 COVERED HOPPER

Product Info: <https://shop.atlasrr.com/d-706-fall-2023-o-premier-catalog.aspx>

**ESTIMATED ARRIVAL: 2nd Quarter 2024**

ORDER IN PIECES	3-RAIL ITEM	ROAD NAME	ROAD NUMBER	COLORS	MSRP/ UNIT
<b>NEW PAINT SCHEMES</b>					
	2001637	ADM	7225, 7234	Blue/White	\$66.95
	2001638	Ag Processing (AGP)	95216, 95266	Green/Yellow	\$66.95
	2001639	Landmark	15359, 15364	Red/White/Black	\$66.95
	2001640	Michigan Elevator Exchange	34412, 34424	Yellow/Black	\$66.95
	2001641	MFA Inc	14348, 14352	Red/White/Blue	\$66.95
	2001642	Reading & Northern	9971, 9977	Gray/Green/Yellow	\$66.95
<b>TOTAL PIECES ORDERED</b>					

**ESTIMATED ARRIVAL: 2nd Quarter 2024**

ORDER IN PIECES	2-RAIL ITEM	ROAD NAME	ROAD NUMBER	COLORS	MSRP/ UNIT
<b>NEW PAINT SCHEMES</b>					
	2001687	ADM	7225, 7234	Blue/White	\$69.95
	2001688	Ag Processing (AGP)	95216, 95266	Green/Yellow	\$69.95
	2001689	Landmark	15359, 15364	Red/White/Black	\$69.95
	2001690	Michigan Elevator Exchange	34412, 34424	Yellow/Black	\$69.95
	2001691	MFA Inc	14348, 14352	Red/White/Blue	\$69.95
	2001692	Reading & Northern	9971, 9977	Gray/Green/Yellow	\$69.95
<b>TOTAL PIECES ORDERED</b>					

Pullman Standard's 4750 cubic foot covered hopper was one of the most successful freight car designs in that company's history. Over 54,000 of these cars were produced during the latter part of the 1970s and early 1980s. It was the premier grain hauler of the era and is still in use.

Found throughout the country on virtually all of the class 1 rail lines, it is also one of the most leased cars through the Transport Leasing Division of Pullman. The cars were painted a virtual rainbow of colors.

### Features:

- Accurate and colorful painting and lettering
- True scale dimensions with accurate details
- Separately-applied roof walk, brake wheel and other details
- Unique body design with "step-curve" roof
- Die-cast 100 ton roller bearing trucks with rotating bearing caps
- Die-cast articulated couplers (3-rail)
- Weighted to NMRA standards
- 2-rail cars feature scale 36" wheel sets and new-design Kadee-compatible scale couplers
- Minimum diameter curve: 0-36 (3-rail)
- Minimum radius curve: 36" (2-rail)
- Length over couplers: 15"
- Height: 3.60"



# PREMIER CATALOG FALL 2023- ROLLING STOCK

**GUARANTEED PRE-ORDER DUE DATE:  
WEDNESDAY DECEMBER 6<sup>TH</sup> 2023**



## ATLAS TRAINMAN® O BAY WINDOW CABOOSE

**NEW  
PAINT  
SCHEMES**

Product Info: <https://shop.atlasrr.com/d-706-fall-2023-o-premier-catalog.aspx>



CP Rail



CSX\*



Dupont



Guilford/D&H



Norfolk & Western



Southern Pacific



Union Pacific - patched Rock Island

\*CSX Licensed Product

Atlas Model Railroad Co., Inc. • 378 Florence Ave., Hillside, NJ 07205 • USA • ph: 908-687-0880 • fax: 908-687-8857 / 908-851-2550 • [shop.atlasrr.com](http://shop.atlasrr.com)



# PREMIER CATALOG FALL 2023- ROLLING STOCK

**GUARANTEED PRE-ORDER DUE DATE:  
WEDNESDAY DECEMBER 6<sup>TH</sup> 2023**



## ATLAS TRAINMAN® O BAY WINDOW CABOOSE

Product Info: <https://shop.atlasrr.com/d-706-fall-2023-o-premier-catalog.aspx>

**ESTIMATED ARRIVAL: 2nd Quarter 2024**

ORDER IN PIECES	3-RAIL ITEM	ROAD NAME	ROAD NUMBER	COLORS	MSRP / UNIT
<b>NEW PAINT SCHEMES</b>					
	2001227	CP Rail	437265, 437267	Yellow/Black/White	\$79.95
	2001228	CSX*	903968, 904003	Gray/Black/Blue	\$79.95
	2001229	Dupont	911B	White/Black/Red	\$79.95
	2001230	Guilford/D&H	35811, 35815	Orange/White	\$79.95
	2001231	Norfolk & Western	557502, 557567	Blue/Yellow	\$79.95
	2001232	Southern Pacific	4648, 4702	Box Car Red/Orange/White	\$79.95
	2001233	Union Pacific - patched Rock Island	24578, 24580	Red/Yellow/White	\$79.95
<b>TOTAL PIECES ORDERED</b>					

**ESTIMATED ARRIVAL: 2nd Quarter 2024**

ORDER IN PIECES	2-RAIL ITEM	ROAD NAME	ROAD NUMBER	COLORS	MSRP / UNIT
<b>NEW PAINT SCHEMES</b>					
	2001277	CP Rail	437265, 437267	Yellow/Black/White	\$84.95
	2001278	CSX*	903968, 904003	Gray/Black/Blue	\$84.95
	2001279	Dupont	911B	White/Black/Red	\$84.95
	2001280	Guilford/D&H	35811, 35815	Orange/White	\$84.95
	2001281	Norfolk & Western	557502, 557567	Blue/Yellow	\$84.95
	2001282	Southern Pacific	4648, 4702	Box Car Red/Orange/White	\$84.95
	2001283	Union Pacific - patched Rock Island	24578, 24580	Red/Yellow/White	\$84.95
<b>TOTAL PIECES ORDERED</b>					

*Matching SD-45 Locomotives available on pages 4-7.*

Along with the Extended-Vision body style, the Bay Window Caboose became one of the preferred designs for cabooses built in the 1950s and beyond. It offered improved visibility for better views of the train while in motion as well as modern amenities for the crew. This TRAINMAN model is based upon features of the Southern Pacific C-30-6 bay window cabooses of 1951, but at the same time is representative of the thousands of such cars used on American railroads.

**Features:**

- Separately-applied see-through roof walk, smoke stack, brake wheel and brake lines
- Premium die-cast couplers and friction bearing caboose trucks
- Weighted, detailed underframes
- Interior lighting with on/off control switch on chassis
- 2-Rail cars feature 33" scale wheels and body-mounted scale couplers
- Accurate and colorful decoration
- Minimum diameter curve: 0-31 (3 rail)
- Minimum radius curve: 24" (2 rail) *\*CSX Licensed Product*

Atlas Model Railroad Co., Inc. • 378 Florence Ave., Hillside, NJ 07205 • USA • ph: 908-687-0880 • fax: 908-687-8857 / 908-851-2550 • [shop.atlasrr.com](http://shop.atlasrr.com)



**ATLAS O TURNTABLE**  
**AVAILABLE FROM YOUR LOCAL HOBBY SHOP OR SHOP.ATLASRR.COM**

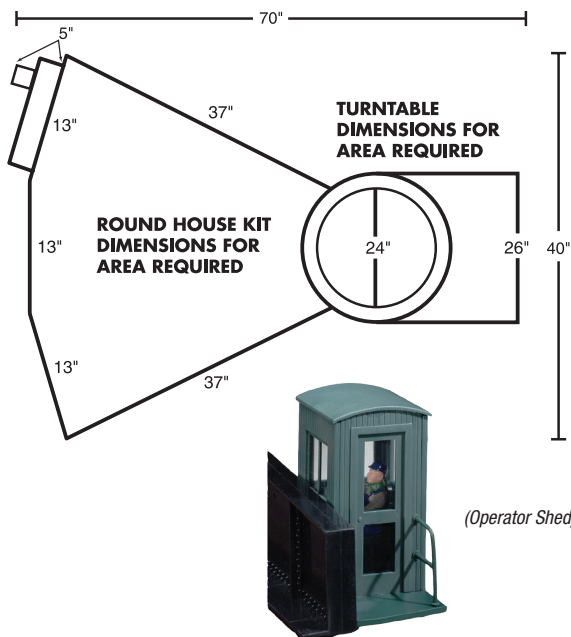
**Product Info:** <https://shop.atlasrr.com/p-53322-o-scale-turntable.aspx>

**O TURNTABLE** - In the steam era, many railroads used turntables to turn locomotives for their next journey. Railroads still use turntables to assist in the maintenance of diesel locomotives and rolling stock. Based on a Santa Fe prototype, Atlas O has realistically duplicated its above ground details, so adding a working turntable has never been simpler. What's more, everything is included for easy tabletop installation.



**FEATURES:**

- New - larger and more powerful motor
- New - flat cogged anti-slip belt
- New - deck support with more roller bearings for greater support of heavier locomotives
- New - redesigned metal contacts to power the rotating track
- Drive assembly is hidden under the utility shed
- Table diameter: 24"
- Proven Geneva-gearing for positive indexing
- Can be used for both 3 rail and 2 rail operation
- Will run on AC or DC power
- Compatible w/ TMCC & DCS (using TMCC or DCS accessory interface)
- Compatible with DCC (using a stationary decoder)
- Molded in appropriate colors
- Complete hook-up instructions
- Easy tabletop installation
- Motor Drive included in box for smooth and easy operation



**Item #6999**  
**Atlas O Turntable - Available Now!**



**ATLAS O SIGNAL SYSTEM**  
**AVAILABLE FROM YOUR LOCAL HOBBY SHOP OR SHOP.ATLASRR.COM**

**Product Info:** <https://shop.atlasrr.com/c-1026-o-signal-system.aspx>



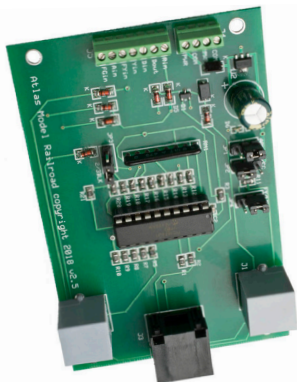
Item #70 000 050 - Signal Attachment Cable



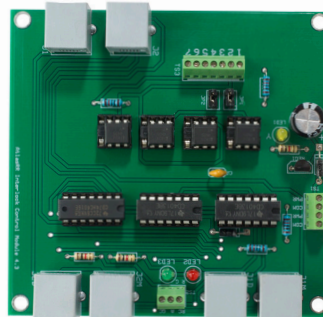
Item #70 000 056 - O Signal Attachment Cable Compatibility Connector



Item #70 000 060 - Universal Cable Connector



Item #70 000 046  
Universal Signal Control Board



Item #70 000 047 - Interlock Control Module



Item #70 000 141 - O Scale Starter Set  
contains: 1 - 70 000 068 O Type G Signal  
1 - 70 000 046 Universal Signal Control Board  
1 - 70 000 050 Signal Attachment Cable  
1 - Quick Start Guide



Item #70 000 066 - O Signal, PRR Position Light, Single Head



ATLAS O SCALE TRACK & ACCESSORIES  
AVAILABLE FROM YOUR LOCAL HOBBY SHOP OR SHOP.ATLASRR.COM

Product Info: <https://shop.atlasrr.com>

Atlas is proud to offer a wide variety of track in both 2- and 3-Rail. Our track is time-tested and modeler approved and is crafted to be the MVP of your layout.

**Modeled for Realism:** The scale-sized plastic ties have a realistic wood grain, the tie plates have spikes, the rail joiners have authentic bolt detail and the center rail is blackened.

**Versatility:** Every track piece has been specially engineered to fit precisely together in an infinite variety of combinations without the need for custom cutting and fitting.

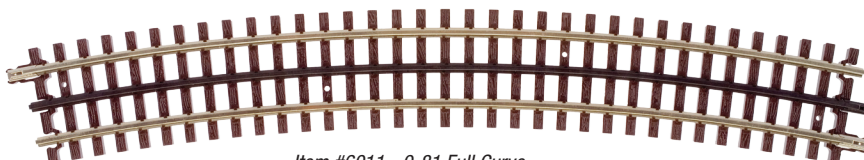
**Performance:** We chose a SOLID nickel silver T-rail for extra stability and superior electrical conductivity. In addition, the wide, flat surface of the rails provides far greater wheel/rail contact and better traction than tubular track. What's more, solid rails absorb sound better than tubular track so you can enjoy the sounds of your locomotive.

**3-RAIL FEATURES:**

- SOLID nickel silver rail for realistic shape, sounds and rust prevention
- Super joiners for tight fit and superior electrical connection
- Large and growing list of track: 10 different diameters (O-27- O-108), 16 different switches, 6 crossings, all the straight pieces you could ever want, flex track and more!
- Geometrically exact layout construction
- UV compatible: great for both indoor and outdoor use



Item #6094 - Track Screws

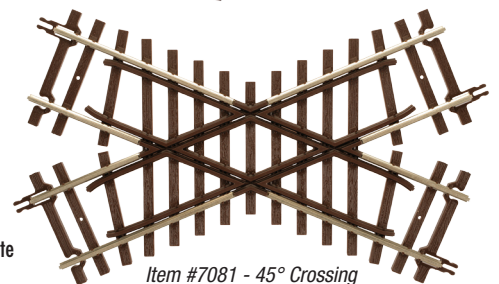


Item #6011 - 0-81 Full Curve



**2-RAIL FEATURES:**

- Code 148 Solid Nickel Silver Rail
- American prototype ties and tie spacing with correct spike, and tie plate and bolt details
- Dark brown tie strip
- Turnouts feature highly detailed metal insulated frogs and points
- Metal frog can be powered if desired
- UV compatible: great for both indoor and outdoor use



Item #7081 - 45° Crossing



Item #7090  
Terminal Joiners (1 pair)

Item #7056 - 2-Rail  
40" Flex-Track® with  
Simulated Wood Ties



Item #7050 - 10" Straight



**ATLAS O SCALE TRACK & ACCESSORIES**  
**AVAILABLE FROM YOUR LOCAL HOBBY SHOP OR SHOP.ATLASRR.COM**

**Product Info:** <https://shop.atlasrr.com>

*Atlas also offers a growing selection of structures, layout accessories and signals for layouts of all sizes. No matter the era or level of detail you choose for your layout, you can be sure that Atlas has the perfect accessories to complete your model empire!*



Item #6920 - Single Track  
Pratt Truss Bridge Kit (3-Rail)



Item #6907 - Jack's Lumber Company Kit



Item #66915 -  
Single Traffic Signal



Item #6948 - Operating Crossing Gate - Black/White  
Item #6949 - Operating Crossing Gate - Red/White



Item #6916  
Steel Water Tower Kit



Item #66912 - Wilson's Gas n Go Structure Kit



Item #6917  
Wheelers Auto Dealer Kit



Item #6909  
Fairview Farm  
Dairy Kit



## 2024 GOLDEN SPIKE CLUB MEMBERSHIP

<https://shop.atlasrr.com/c-1000-ogsc.aspx>

***Become a Member of Atlas O's Golden Spike Club! Don't Delay  
Join Today – Memberships for 2024 are Available Now!***

***Sign-up online or download your application today at: [shop.atlasrr.com/c-100-ogscx.htm](https://shop.atlasrr.com/c-100-ogscx.htm) For more information on membership, or to join, please contact Patricia Kimble, Golden Spike Club Coordinator at 908-687-0880 ext. 7122, or via email [pkimble@atlasrr.com](mailto:pkimble@atlasrr.com)***

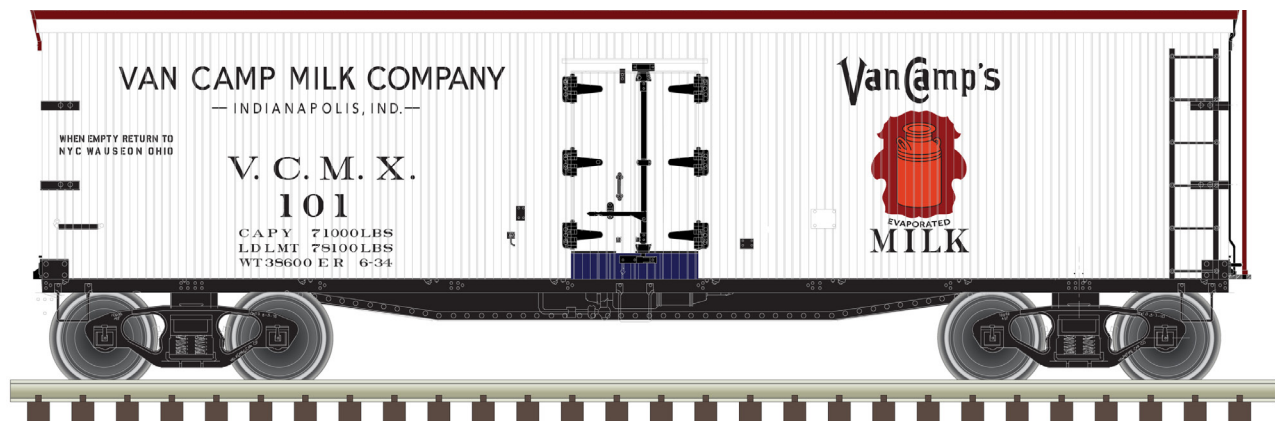
### THE BENEFITS

Club benefits for all members in all levels include:

- **Laminated membership card:** with member's name and number: The membership card features artwork that changes from year to year, highlighting the annual club car on its front.
- **Club lapel pin (New members only):** Wear it and let your friends know that you're a member of the Atlas Golden Spike Club with this pin, handsomely crafted and sporting the colorful logo.
- **Opportunity to Purchase "Members Only" Annual Club Car:** As a club member you will have the option to purchase exclusive members only annual club car(s).
- **Discounted Pricing on Club Offers:** As a club member, you will have the opportunity to purchase premium Atlas products at special Golden Spike Club pricing.
- **Insider Club News:** Get the inside scoop on the latest club offerings and the stories behind them, as well as other special offers and more mailed/e-mailed directly to you!
- **FREE Ground Shipping:** For any regular on-line orders shipped within the continental US.

## 2024 ANNUAL CLUB CARS ATLAS MASTER® O 40' WOOD REEFER

\*available with deluxe memberships



**Van Camp's Milk Co. #101**  
Keep an eye out for GSC 2024 Special Offers! Information coming soon!